



LANGSTON UNIVERSITY
SPRING 2018
CAREER FAIR
WELCOME PACKET

WEDNESDAY, MARCH 7, 2018 | 9:00AM-2:00PM
C.F. GAYLES GYMNASIUM

WELCOME

Welcome to Langston University, home of the Lions! We are so glad that your organization is joining us for our 2018 Spring Career Fair. This guide is designed to help you plan for our career fair and ensure that your participation is successful.

The Office of Career Services thanks you for your participation and appreciates your time and outreach to our students.

This spring we have brought together 60 companies and over 100 representatives to meet with our student body and are excited to show what Langston University has to offer.

ABOUT LANGSTON UNIVERSITY

Founded in 1897 as a land grant institution, Langston University is the only Historically Black College and University (HBCU) in the state of Oklahoma. The University has a rich history of growth and development that emphasizes the perseverance and dedication of its administration, faculty, and students. Langston University has both a rural and urban mandated mission with campuses in Langston, Oklahoma City, and Tulsa. Our vision is to provide quality post-secondary education leading to professional competence and degree completion to diverse populations of traditional and non-traditional students.

Six schools house the degree programs of Langston: Agriculture and Applied Sciences, Arts and Sciences, Business, Education and Behavioral Science, Nursing and Health Professions, and Physical Therapy. Since her founding, Langston University has grown to more than 100 buildings and facilities and an operational and capital budget of approximately \$52,761,336 from the state and other resources and \$22,800,000 from the federal government; a faculty of over 100 persons; a curriculum leading to five (5) associate degree programs, over thirty-five (35) baccalaureate degree programs, four (4) master's degree programs and a Doctor of Physical Therapy program.

Langston University is accredited by the Higher Learning Commission of the North Central Association of Colleges and Schools. Individual programs within the University are accredited by the: Oklahoma Board of Nursing, National Council for the Accreditation of Teacher Education, National League for Nursing, Association of Collegiate Business Schools and Programs, Commission on Accreditation in Physical Therapy Education, American Physical Therapy Association, and the Council on Rehabilitation Education, respectively.

EVENT LOCATION:

C.F. Gayles Gymnasium
Langston University
701 Sammy Davis Jr. Drive
Langston, OK 73050

MAILING INFORMATION:

ATTN: Career Services
Langston University
P.O. Box 1500
Langston, OK 73050

FOR DELIVERY OF CAREER FAIR MATERIALS:

ATTN: Career Services
Page Hall, Room 311
Langston University
P.O. Box 1500
701 Sammy Davis Jr. Drive
Langston, OK 73050

PRIMARY CONTACT INFORMATION:

Bianca J. Bryant, J.D.
Director of Career and Professional Development
Office of Career Services

Phone: (405) 466-3433
Mobile: (405) 698-0397
Facsimile: (405) 466-6014
Email: bjbryant@langston.edu

INTERNET ACCESS:

Use: LU-WIRELESS-OPEN

PAYMENT INFORMATION:

If you have not yet submitted payment for your registration fee, please be sure to visit the registration desk upon arrival at the career fair to complete your payment online with a credit card. If you are paying by check, please make your check payable to “Langston University” and reference “Spring 2018 Career Fair” in the memo line. Checks may be delivered upon arrival at the career fair or may be mailed to: ATTN: Career Services, P.O. Box 1500, Langston, Oklahoma, 73050.

If you have any questions or require an invoice to issue payment, please contact Bianca Bryant at (405) 466-3433 or by email at bjbryant@langston.edu.

CAREER FAIR ITINERARY:

Check In 8:00 a.m.

Breakfast 8:15 – 8:45 a.m.

Career Fair Starts 9:00 a.m.

Lunch 11:30 a.m. – 12:30 p.m.

Career Fair Ends 2:00 p.m.

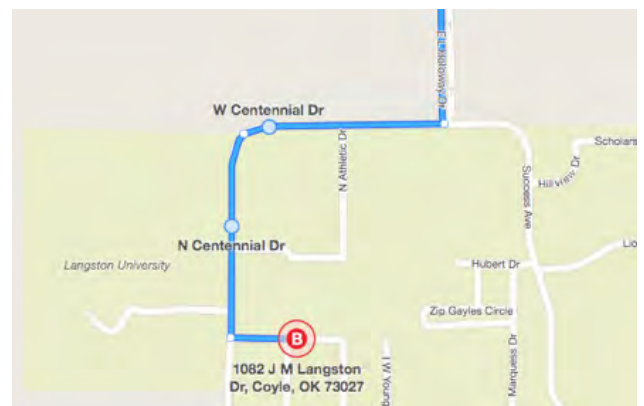
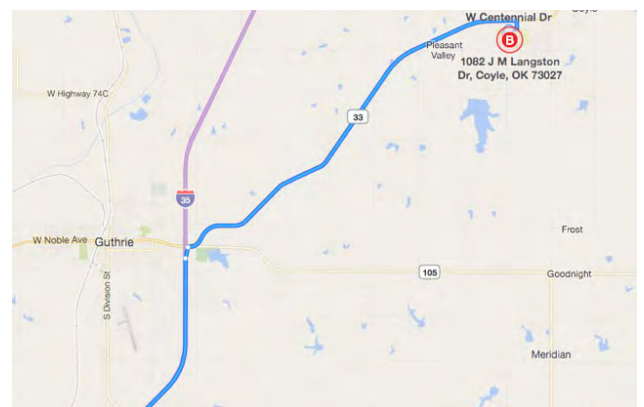
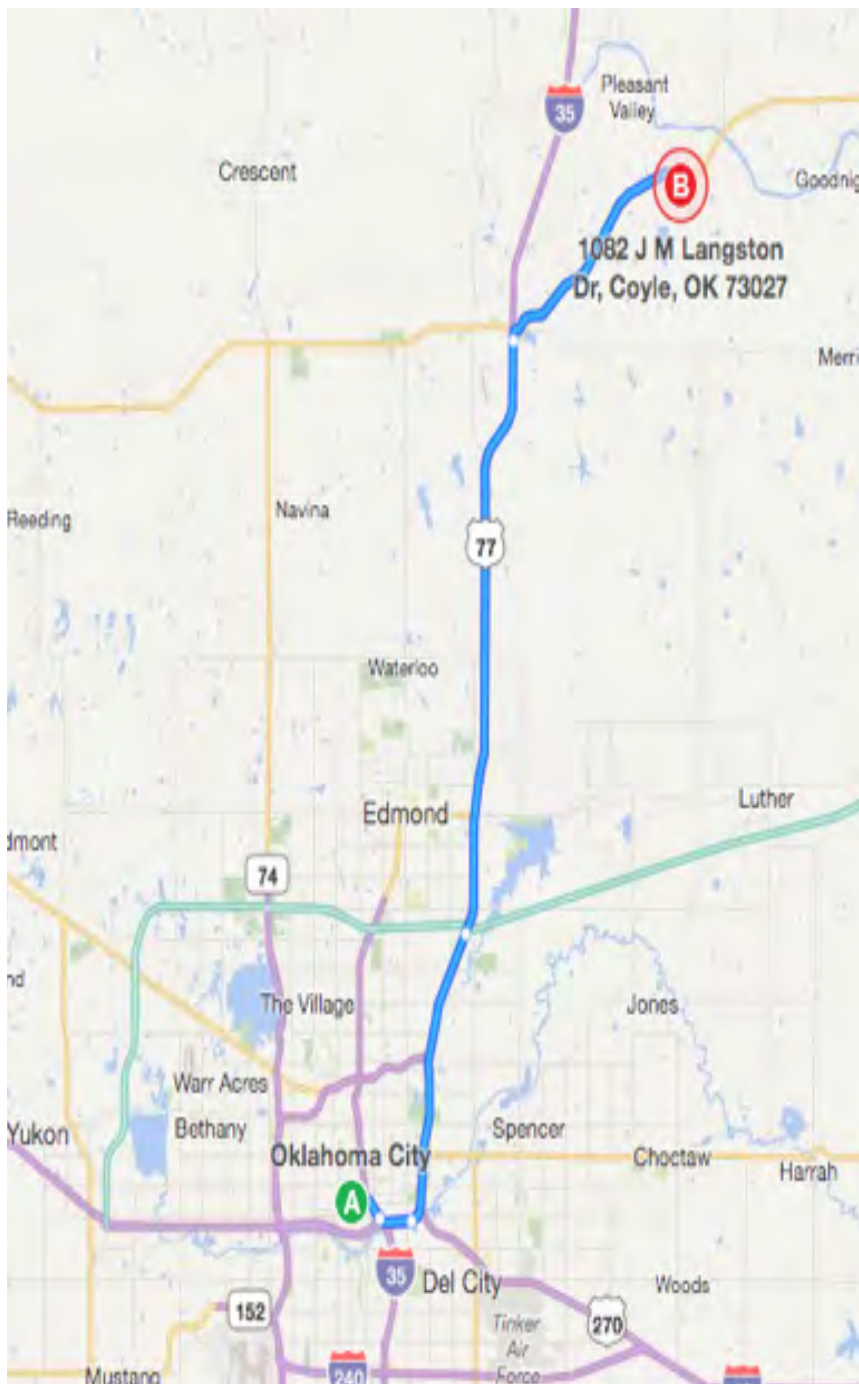
PARKING ON CAMPUS:

Participants may park in the lot directly to the West of the Student Services Center.

DIRECTIONS AND MAPS:

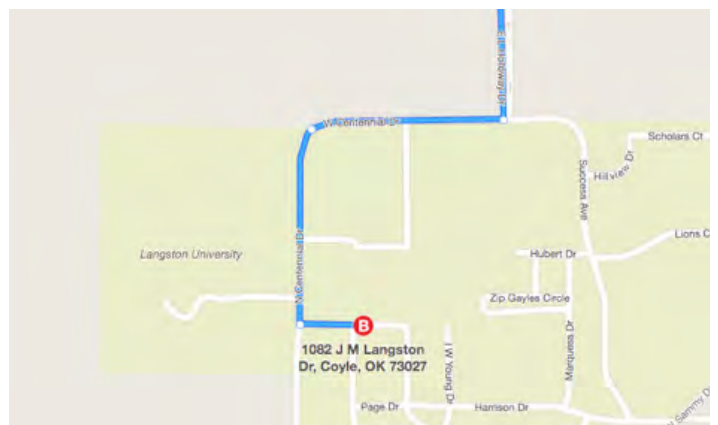
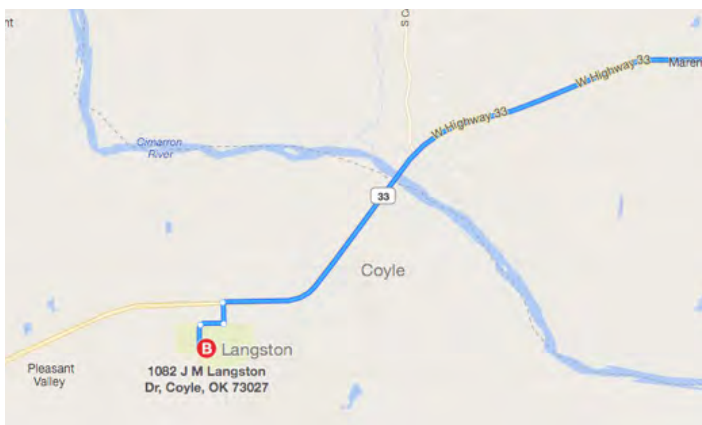
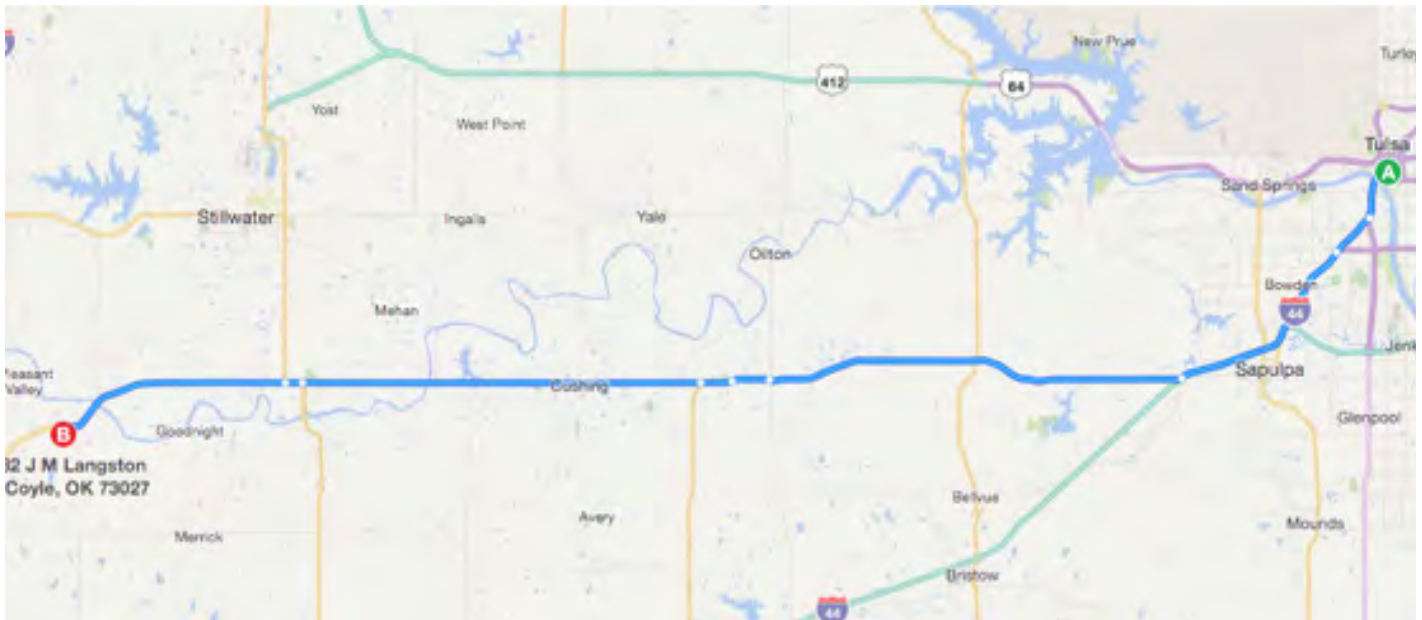
DIRECTIONS TO NORTH ENTRANCE FROM OKLAHOMA CITY METRO AREA:

- Take I-35 N towards OK-33 E in Logan County.
- Keep right at the fork to continue on I-35 N/US-62 E, follow signs for I-44/Tulsa/Wichita
- Continue to follow I-35 N.
- Take exit 157 for OK-33 toward Guthrie/Perkins/Cushing.
- Turn right onto OK-33 E.
- Follow OK-33 E until you reach the North Entrance of Langston University.
- Turn right onto the main drive into campus. From here follow the directions indicated on the campus map included on **Page 7**.



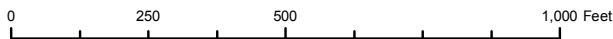
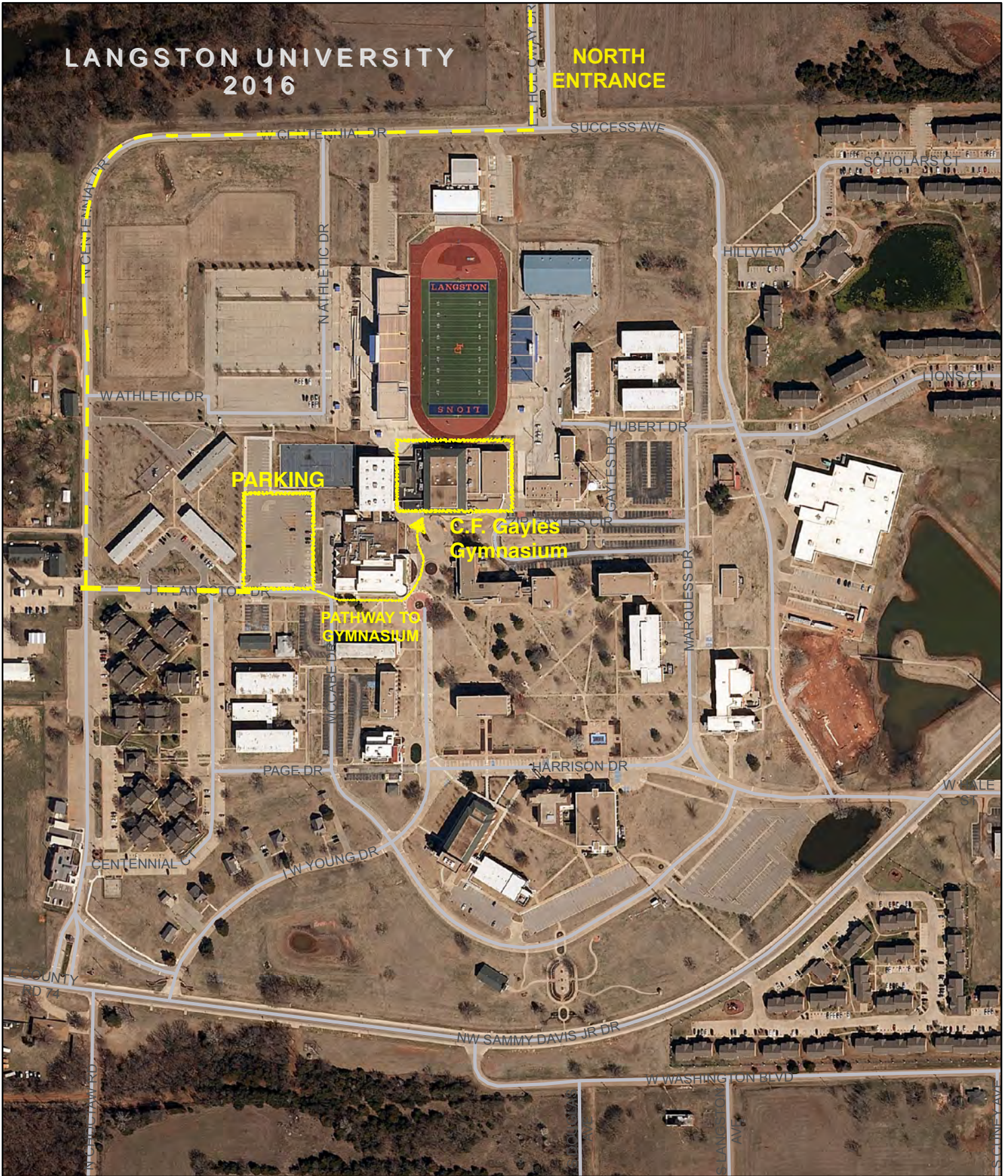
DIRECTIONS TO NORTH ENTRANCE FROM TULSA AREA:

- Merge onto I-244 W
- Keep right at the fork to stay on I-244 W, follow signs for Oklahoma City.
- Continue onto I-44 W.
- Keep right to continue on I-44 and merge onto Turner Turnpike.
- Take exit 211 for OK-33 toward Kellyville/Drumright/OK-66.
- Turn right onto OK-33 W.
- Follow OK-33 W until you reach the North Entrance of Langston University.
- Turn left onto the main drive into campus. From here follow the directions indicated on the campus map included on **Page 7**.



LANGSTON UNIVERSITY 2016

**NORTH
ENTRANCE**



21 E. Main, Suite 100
Oklahoma City, OK 73104
Telephone: (405) 234-2264
FAX : (405) 234-2200

ACOG_911-0081_85x11 Mike Davis 3/9/2016

Disclaimer - This map/data was created and assembled by ACOG for your informational, planning reference and guidance only. None of these materials should be utilized by you or other parties without the benefit of advice and instruction from appropriate professional services. These materials are not verified by a Registered Professional Land Surveyor for the State of Oklahoma and are not intended to be used as such. ACOG makes no warranty, express or implied, related to the accuracy or content of these materials and map/data.

Local Hotel and Lodging Information:

Holiday Inn Express
2227 E. Oklahoma Avenue
Guthrie, Oklahoma 73044
Phone: (405) 260-1400
Distance: 9.7 miles from campus

Sleep Inn & Suites
414 Heather Rd.
Guthrie, Oklahoma 73044
Phone: (405) 260-1400
Distance: 9.6 miles from campus

America's Best Value
2323 Territorial Trail
Guthrie, Oklahoma 73044
Phone (405) 282-2100
Distance: 9.4 miles from campus

La Quinta Inn & Suites
406 Heather Road
Guthrie, Oklahoma 73044
Phone: (405) 293-6000
Distance: 10.9 miles from campus

Interstate Motel
2213 E Oklahoma Avenue
Guthrie, Oklahoma 73044
Phone: (405) 282-770
Distance: 11.1 miles from campus

Hampton Inn & Suites
401 Cimarron Blvd.
Guthrie, OK 73044
Phone: (405) 293-9595
Distance: 9.9 miles from campus